

Maße

# Jaudt-Vario-Schieber

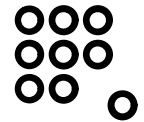
**JAUDT**

Dimensions

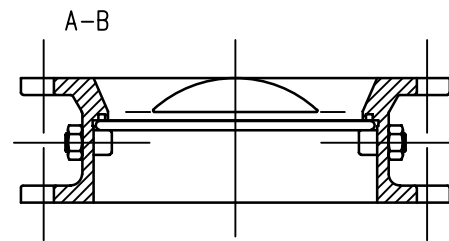
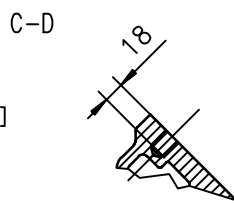
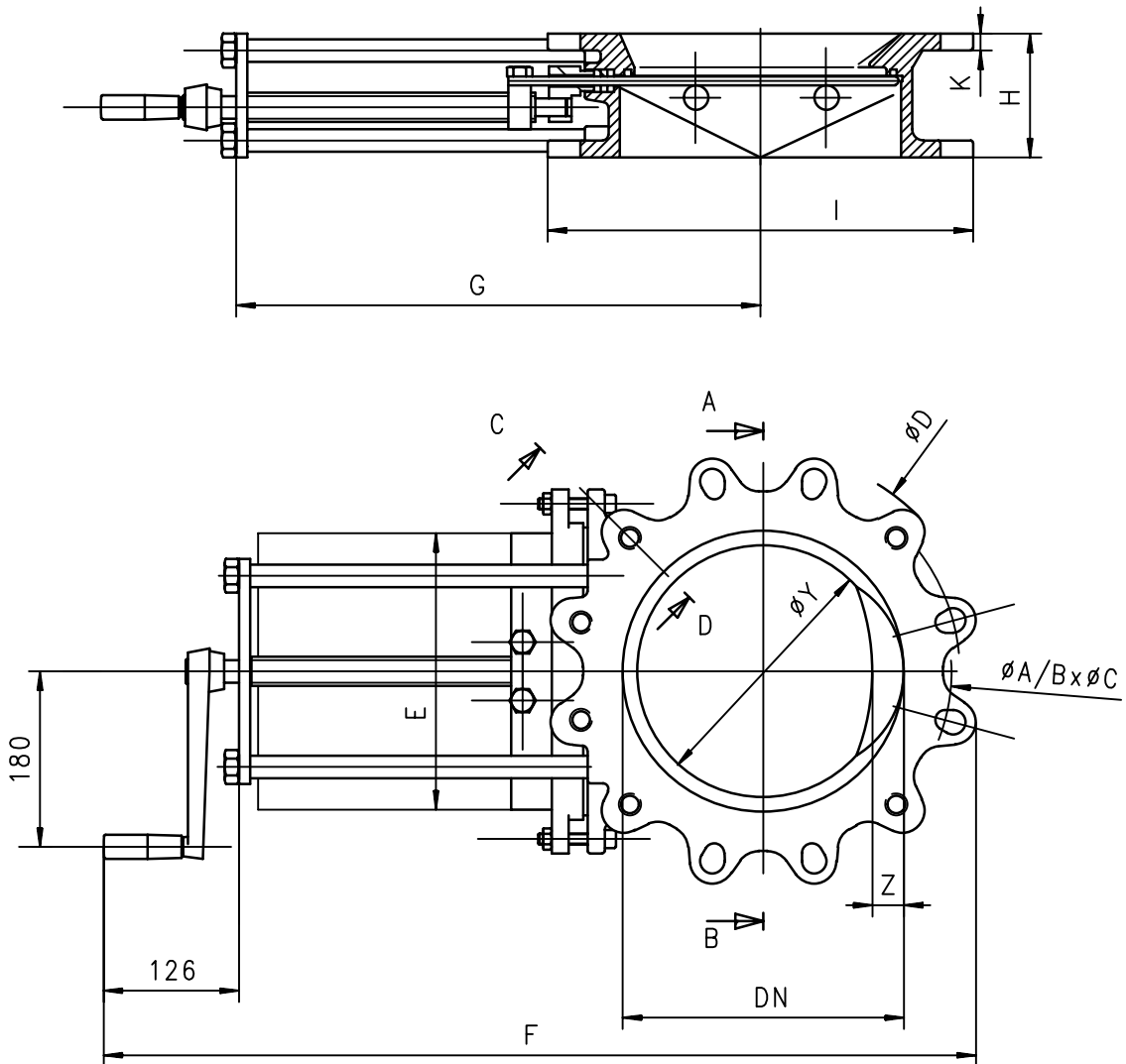
Slide gate

Dimension

Etanche plane



Rundflansch-Handkurbel - round flange-crank handle - bride rond-manivelle



GE Alu = Gewicht Gehäuse Alu [kg]

GE GG = Gewicht Gehäuse GG [kg]

bei allen PN 10 möglich

<sup>1</sup> ANSI B16,5 möglich

DN	GE Alu	GE GG	A	BxØC (PN6)	D	E	F	G	H	I	K	ØY	Z
100 <sup>1</sup>	11	19	170	4xM16	220	98	486	250	90	220	12	74	-
150 <sup>1</sup>	14	22	225	8xM16/Ø18	280	148	582	325	90	262	12	124	28
200 <sup>1</sup>	18	29	280	8xM16/Ø18	335	198	683	400	100	314	12	174	28
250 <sup>1</sup>	22	36	335	12xM16/Ø18	390	248	790	475	110	378	15	220	28
300 <sup>1</sup>	28	47	395	12xM20/Ø22	440	298	895	556	120	426	15	270	28
350 <sup>1</sup>	37	67	445	12xM20/Ø22	505	348	1010	631	130	505	15	320	28
400	43	76	495	16xM20/Ø22	565	398	1111	706	140	558	15	374	28

Änderungen vorbehalten