

Maße

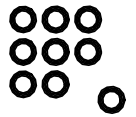
Schaltweiche asym. 45°

JAUST

NW: AxB

BH: H

Typ: 6406xx.x451



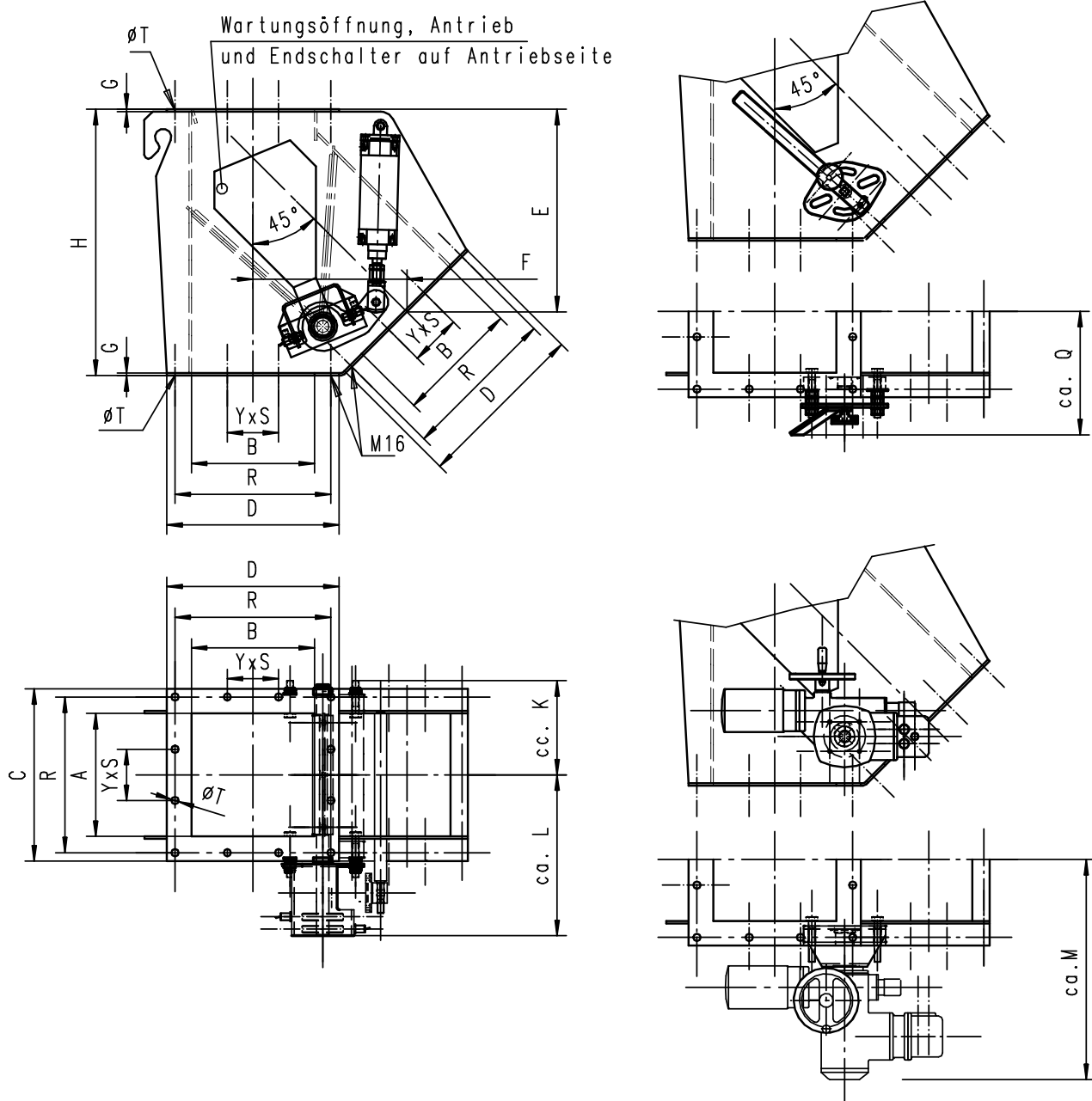
Dimensions

Diverter valve

Dimension

Notice d'utilisation

2-Wege, asymmetrisch - -



AxB	C	D	E	F	G	H	K	L	M	Q	R	YxS	øT	Zyl.	Motor
150x150	270	270	347,5	247,5	5	450	155	330	450	295	230	1x100	ø18	ø63x80	SG05..
200x200	320	320	354,5	290	5	475	180	355	425	320	280	1x95	ø18	ø63x100	SG07..
250x250	370	370	442	333	6	580	205	380	500	345	330	1x110	ø18	ø80x100	SG07..
300x300	420	420	494,5	375,5	6	650	230	405	525	370	380	1x125	ø18	ø80x125	SG07..
350x350	470	470	577	418	6	750	255	430	550	395	430	1x145	ø18	ø100x160	SG07..
400x400	520	520	609	461	6	800	280	455	575	420	480	1x160	ø18	ø125x160	SG10..
500x500	620	620	774	546	8	1000	330	505	665	470	580	3x115	ø18	ø125x160	SG12..
600x600	720	720	938	631,5	8	1200	380	555	715	520	680	3x135	ø18	ø125x200	SG12..